

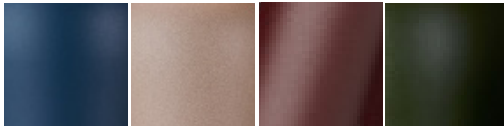


FUSE

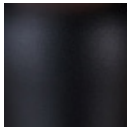
Fuse is a modern, Swedish made design lighting that gives a comfortable impression and fits just as well in public spaces as in your private favorite room. The base is built out of bent pipes lacquered in timeless colors which is combined with a textile shade, either in matching or deviating colors. The shade's textile material also has desirable properties such as flame retardant and also sound absorbing properties, which provides an extra security in your product selection.

Design: Joakim Fihn

Base 3711

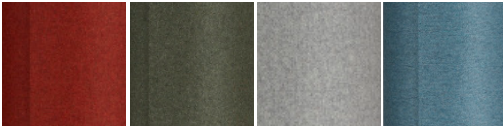


200 Azurite **202 Sand structure** **277 Dark red** **282 Bottle green**



86 Black structure

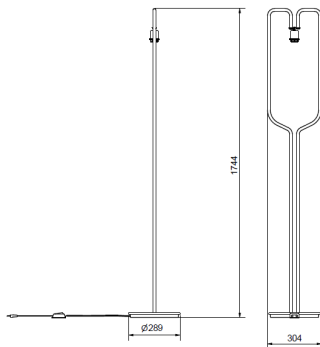
Wool shade 9479




740 Rust **741 Green** **742 Gray** **743 Blue**



745 White



Item no.	Base 3711, Wool shade 9479
Category	Floor Lamp
Material	Metal, textile
Cord	2,7 m textile cable
Switch	Switch on cord
Dimmable function	No
Voltage	230V
Socket	E27
Wattage max	20W
Classification	
IP Class	IP20
Height incl. shade mm	1744
Depth incl. shade mm	304
Height shade mm	540
Ø shade mm	270
Light source included	No
Recommended light source	872209, E27 DIM 8W



BELID