

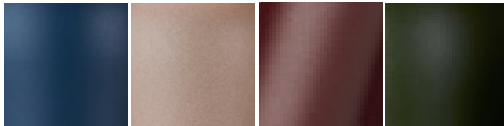
PENSILE

Pensile is a modern, Swedish made design lighting that gives a comfortable impression and fits just as well in public spaces as in your private favorite room. The base is built out of bent pipes lacquered in timeless colors which is combined with a textile shade, either in matching or deviating colors. The shades textile material also has desirable properties such as flame retardant and also sound absorbing properties, which provides an extra security in your product selection.

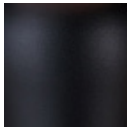
Design: Joakim Fihn



Suspension 1710

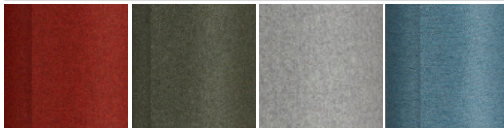


200 Azurite
202 Sand structure
277 Dark red
282 Bottle green



86 Black structure

Wool shade 9479




740 Rust
741 Green
742 Gray
743 Blue



745 White



Item no.	Suspension 1710, Wool shade 9479
Category	Pendant
Material	Metal, textile
Cord length	2,4 m
Dimmable function	Yes
Voltage	230V
Socket	E27
Wattage max	20W
Classification	
IP Class	IP20
Height pendant mm	1033
Ø incl. shade mm	338
Height shade mm	540
Ø shade mm	270
Product weight kg	1,4+0,7
Light source included	No
Recommended light source	872209, E27 DIM 8W



BELID